

P R E T T Y L A V I S H

BRIDAL CATALOGUE
NUMBER 55 - KILDARE VILLAGE



PRETTY LAVISH
is a contemporary
womenswear brand where
high street ease meets quiet
luxury.

Founded in 2013 by sisters Stephanie and Samantha Frost, the brand began as a passion project with a mission to make luxury fashion feel accessible and empowering. Today, Pretty Lavish creates modern, versatile pieces from signature occasionwear to elevated knitwear, designed to help women feel confident, connected, and effortlessly elegant.



Keisha Maxi Bridesmaid
Dress - Matte Olive
Village Price € 84



Julia Strapless Crepe
Maxi Bridesmaid Dress -
Olive
Village Price € 89



Amelia Maxi Bridesmaid
Dress - Matte Olive
Village Price € 84



Edie Chiffon Maxi
Bridesmaids Dress - Olive
Village Price € 84



Piper Maxi Bridesmaid
Dress - Matte Bronze
Village Price € 84



Keisha Maxi
Bridesmaids Dress -
Matt Bronze
Village Price € 114



Keisha Maxi Bridesmaid
Dress - Matte Champagne
Village Price € 84



Piper Maxi Bridesmaid Dress
- Matte Champagne
Village Price € 84



Edie Chiffon Maxi
Bridesmaids Dress -
Champagne
Village Price € 84



Julia Strapless Crepe Maxi
Bridesmaid Dress -
Champagne
Village Price € 84



Amelia Tie Maxi
Bridesmaid Dress - Matte
Sage
Village Price € 84



Esmee V-Neck Crepe Maxi
Bridesmaid Dress - Sage
Village Price € 89



Piper Tie Maxi
Bridesmaid Dress - Matte
Sage
Village Price € 84



Constance Ruffle
Chiffon Maxi
Bridesmaid Dress -
Lemon
Village Price € 134



Keisha Maxi Bridesmaid
Dress - Lemon
Village Price € 130



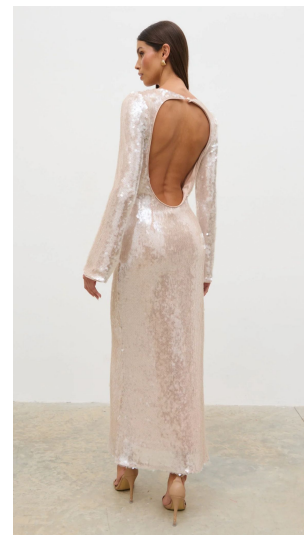
**Keisha Chiffon Maxi
Bridesmaid Dress -
Blush**
Village Price € 84



**Esmee Crepe Maxi
Bridesmaid Dress - Blush**
Village Price € 89



**Milly Chiffon
Bridesmaid Dress -
Blush**
Village Price € 86



**Lyra Long Sleeve
Sequin Midaxi Dress -
Oyster**
Village Price € 139

FIND US AT

NUMBER 55 - KILDARE VILLAGE





PRETTY LAVISH

<https://prettylavish.co.uk/>

